

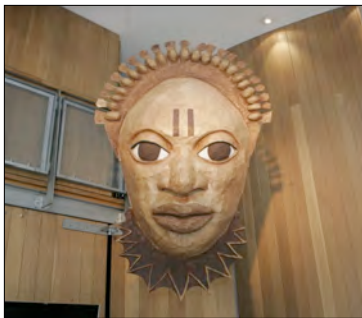


Architecture of The Ark: Further Information



Theatre Space

- Santiago Callatravas designed the outer doors that open up unto the Square that create an Amp theatre.
- Built to child size proportions so children would not be intimidated. Also reason for amphitheatre instead of a Black Box.



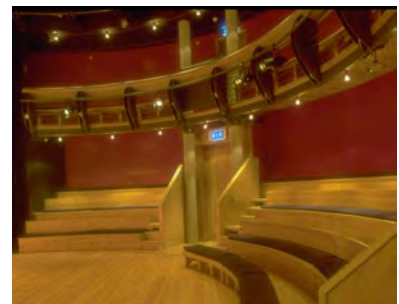
themselves.

Reception Area

- Walls are American White Oak and floors are Portuguese Sandstone
- Original façade is the only remaining feature of the Presbyterian Meeting House.
- Controversial to leave the concrete unfinished, however it was to keep from patronizing the children and to show them a serious space has been created for them to express

Basement:

- The ceiling was built to model the underbelly of The Ark. The artist is James Scanlon as part of the government scheme "A Percentage"- A certain percentage of new buildings must incorporate the Arts.
 - Scanlon is Ireland's leading stained glass artist and his works are exhibited all over the world.
- The table open up to benches to mimic Church pew - homage to Presbyterian roots
- The tubes in the wall are the air conditioning ducts.
- The back cabin is an intimate space with a skylight meant to mimic a port hole in the Ark.
- Bathroom doors are replicas of the outside workshop windows.



Long Room

- The glass in the window frames are small and not uniform because they are hand made. The Presbyterians did not have the technology to role out large glass sheets so they hand blew glass and then pressed them between wooden boards.
- The skylights in the balcony part of the “Of Land and Sky” program (1998). Martina Galvin and 1500 children used all natural materials (woods, dyes, etc) to create patterns. This was to continue the Ark theme through the building.
- Eagle Bench was commissioned by Owen Crawford for the Temple Bar Children’s Hospital. It was placed in the waiting room but people kept tripping over it so it found a home in the Ark.



Fire and Safety:

- The stairs are built from perforated metal for many reasons:
 - To ventilate the staircase in an emergency. The skylight in the roof pops open when the alarm sounds and allowing the smoke to rise through the stairs and out of the roof (Chimney effect)
 - To allow natural sunlight to illuminate the staircase.
 - Metal and non flammable materials to isolate any accidents
- Battery packs in the light fixtures in case of a power failure.
- Window in portholes of the doors as best practice



Gallery

- Height of gallery’s ceiling is to accommodate the size of the theatre space
- Walls are movable to change the shape of the room.
- Multi functional

Workshop

- Only floor of the building that would not have existed in the Original Presbyterian meeting house.
- 4 Bays for the light sources with the Northern light panels being the most important. Best light for an artist is from the North
- Multifunctional space
- Curved Glass wall to roof garden for lighting purposes.
- In roof garden, there are mosaics that were created as part of the “Plant an Idea” Program. The artist Laurie O’Hagan worked with children to create them and they were inspired by a trip to the Botanical Gardens. The program was launched by the Minister of Education.